

CASHCOT



OLCESE  
FERRARI

*il filato italiano*

CASHCOT

MADE IN ITALY

1/250

# CASHCOT

Ne 30/1 - Nm 1/50000

85% Cotone Makò / Makò Cotton - 15% Cashmere



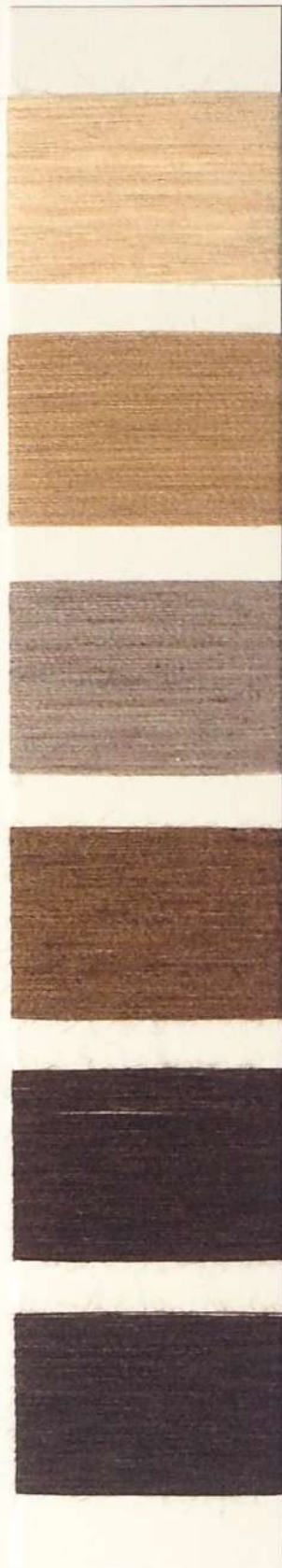
GREGGIO  
730X

CHIARO  
1238 - A

ARGENTARIO  
A375 - A

ACCIAIO  
3703 - A

ARGENTO  
9403 - C



BEIGE  
1235 - A

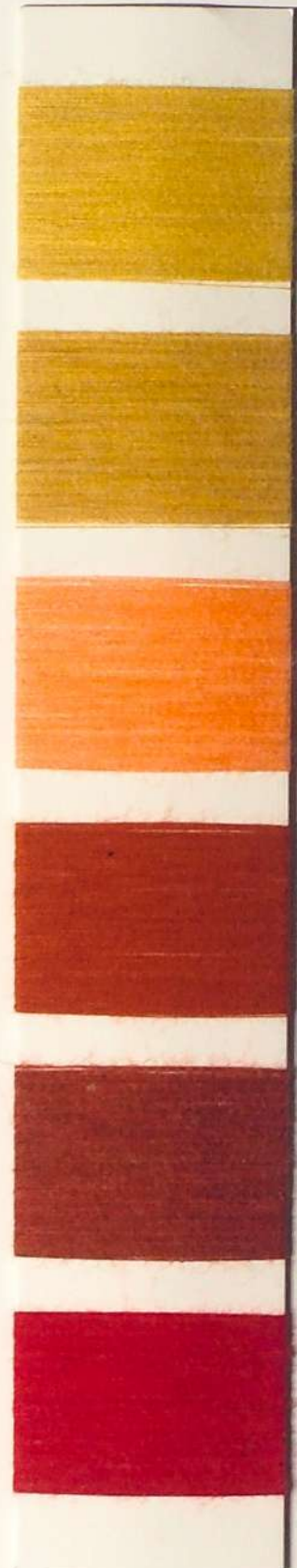
ARACHIDE  
1236 - A

LEGNO  
8A74 - B

NOCCIOLA  
3605 - B

MORO  
1237 - C

CASTAGNA  
8A76 - D



GIRASOLE  
8C01 - C

OCBRE  
Y078 - C

TEA  
8C02 - B

BRUCIATO  
5350

SANGRIA  
8C03 - D

GERANIO  
9815 - D

STOCK SERVICE



# CASHCOT

№ 30/1 - Nm 1/50000

85% Cotone Makò / Makò Cotton - 15% Cashmere



PELAT  
8A93 - D



GLICINE  
8C04 - C



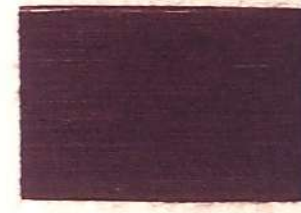
ANTICO  
9B20 - C



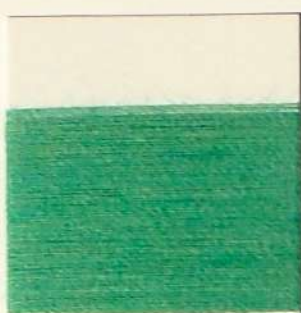
MALVA  
8C05 - C



BORDO'  
5351



BISHOP  
5352



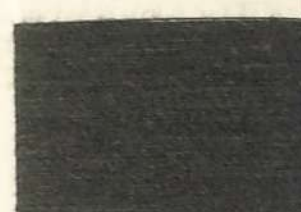
PRATO  
8C06 - C



CYPRESS  
8084 - C



SMERALDO  
8C07 - D



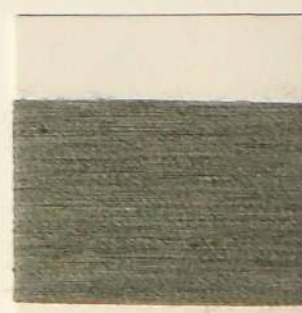
ESERCITO  
8C08 - D



CAMINO  
8A91 - D



FORESTA  
8C09 - E



BERICO  
8A89 - B



AGOLA  
8A87 - D



NEBO  
5353



SAPPHIRE  
8093 - C



MEDEL  
8A79 - D



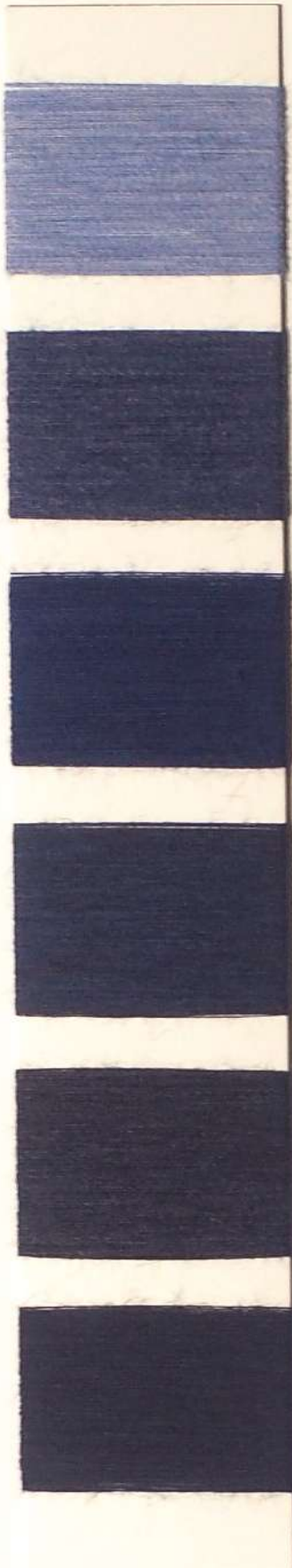
UVA  
8A80 - D

STOCK SERVICE

# CASHCOT

Ne 30/1 - Nm 1/50000

85% Cotone Makò / Makò Cotton - 15% Cashmere



CORNFLOWER  
8037 - B

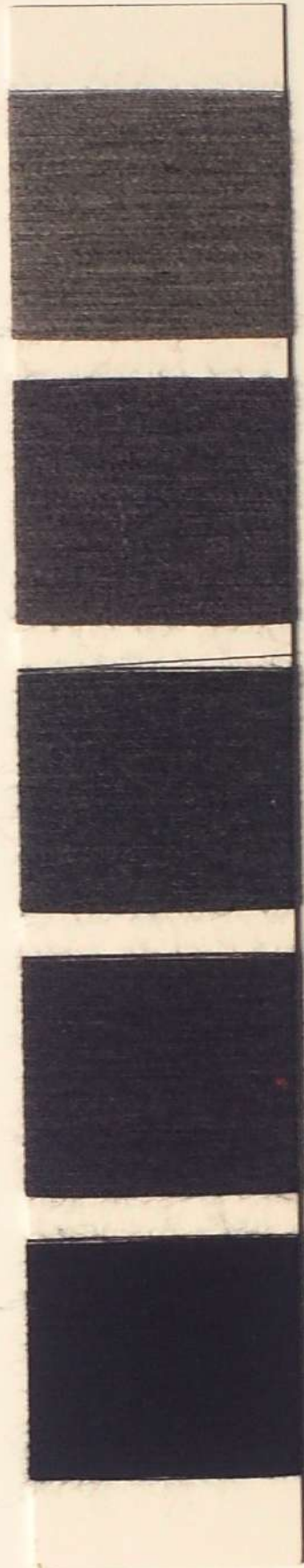
COSMO  
8A78 - D

NOTTE  
9584

OCEANO  
9683 - E

IRON  
1242 - C

NAVY  
5354



NEBBIA  
1239 - B

FERRO  
9803 - C

OMBROSO  
8838 - D

DARK  
785U - D

NERO  
0071

STOCK SERVICE



# CASHCOT

Ne 30/1 - Nm 1/50000

## COMPOSIZIONE

85% Cotone Makò - 15% Cashmere

## ATTENZIONI PARTICOLARI

I colori non sono solidi alla sovratintura ed al candeggio

In tessitura utilizzare il mischiatrama

In maglieria utilizzare su finzze adeguate

## MINIMI

Colori **STOCK SERVICE**: minimo una scatola

Maggiorazione prezzo applicata a quantità inferiori alla scatola

Altri colori se non disponibili: ordine minimo Kg 300

## COMPOSITION

85% Makò Cotton - 15% Cashmere

## SPECIAL CARES

Colour fastness is not sufficient for over dyeing

Colours are not suitable for bleaching

Weftblend is recommended in weaving

Knit on adequate gauge

## MINIMUM

**STOCK SERVICE** colours: one box minimum

For quantity less than one box: extra charge

Other colours if not available: minimum order 300 Kgs

## INFORMAZIONI TECNICHE / TECHNICAL INFORMATION

SOLIDITÀ FASTNESS	ISO	SCARICO SU COTONE DISCHARGE ON COTTON	DEGRADO COLOR CHANGING
LAVAGGIO IN ACQUA 40°C WASHING AT 40°C	105-C06	4	4
LAVAGGIO A SECCO / DRY CLEANING	105-D01	4	4
SUDORE ACIDO-ALCALINO ACID-ALKALINE PERSPIRATION	105-E04	4	4
SFREGAMENTO/RUBBING REATTIVI / ZOLFO A SECCO/DRY REATTIVI A UMIDO / WET ZOLFO A UMIDO / WET	105-X12	3 - 4 3 - 4 2 - 3	4 4 3
LUCE ARTIFICIALE / ARTIFICIAL LIGHT	105-B02	—	4

NOTE: valori medi / average values



COTONIFICIO OLCESE FERRARI S.p.A.

Ufficio commerciale: Via Marzaghetta, 7 - 25030 Adro (BS) ITALY

Tel. +39 02 2671721 / 030 7458830 - Fax +39 02 26717233 / 030 7458833

info@olceseferrari.it - sales.office@olceseferrari.it

www.olceseferrari.it

OEKO-TEX®  
CONFIDENCE IN TEXTILES  
STANDARD 100

1108631.0 CENTROCOT

Tested for harmful substances.

www.oeko-tex.com/standard100

